

[Home](#) - [Products](#) - [Technical Data](#) - [Reps/Distr.](#) - [Contact Us](#)

RIGHT ANGLE PCB MOUNT CONNECTORS (0.318) - DR SERIES

SPECIFICATIONS:

MECHANICAL:

Shell: Steel

Finish: Tin plated

Insulator: Thermoplastic UL94V0

CONTACTS:

Stamped Pin: Copper Alloy

Contact Engagement Force: Max. 12 oz. [3.40N]

Contact Separation Force: Max. 0.75 oz. [0.20N]

Finish: Reference Drawing

ELECTRICAL:

Current Rating: 3 amps

Voltage Rating : 250 vac

Dielectric Withstanding Voltage: 1000 vac @ 1 min.

Insulation Resistance: >3000 meg ohm @ 500 vdc

Contact Resistance: <15 milli ohms (mated)

Temperature Range: -55° TO +105° C

Available Sizes:

Male: 9, 15, 25 & 37 position

Female: 9, 15, 25 & 37 position

[RoHS Compliant](#)

[DOWNLOAD](#)

[DRAWING](#)

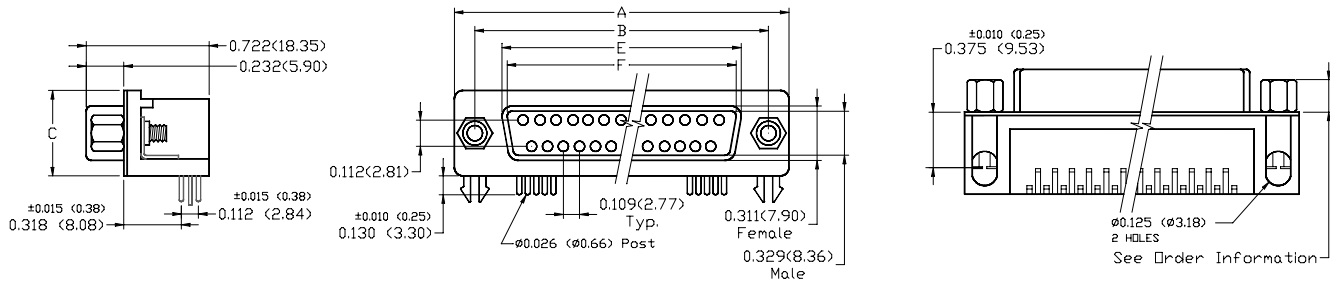
[CERTIFICATE OF
COMPLIANCE](#)



Part Numbers

XDRE9PTE1I	XDRE9PTE2I	XDRE9PTE3I	XDRE9PTE1S	XDRE9PTE2S	XDRE9PTE3S
XDRE9ST1I	XDRE9ST2I	XDRE9ST3I	XDRE9ST1S	XDRE9ST2S	XDRE9ST3S
XDRE15PTE1I	XDRE15PTE2I	XDRE15PTE3I	XDRE15PTE1S	XDRE15PTE2S	XDRE15PTE3S
XDRE15ST1I	XDRE15ST2I	XDRE15ST3I	XDRE15ST1S	XDRE15ST2S	XDRE15ST3S
XDRE25PTE1I	XDRE25PTE2I	XDRE25PTE3I	XDRE25PTE1S	XDRE25PTE2S	XDRE25PTE3S
XDRE25ST1I	XDRE25ST2I	XDRE25ST3I	XDRE25ST1S	XDRE25ST2S	XDRE25ST3S
XDRE37PTE1I	XDRE37PTE2I	XDRE37PTE3I	XDRE37PTE1S	XDRE37PTE2S	XDRE37PTE3S
XDRE37ST1I	XDRE37ST2I	XDRE37ST3I	XDRE37ST1S	XDRE37ST2S	XDRE37ST3S

D-SUB RIGHT ANGLE PCB MOUNT CONNECTORS (0.318) - DR SERIES



SPECIFICATIONS:

MECHANICAL

Shell: Steel
 Finish: Tin Plate.
 Insulator: Thermoplastic UL94V-0, Black.
 Contacts: Male Pin: Stamped - Copper Alloy.
 Female Socket: Stamped - Copper Alloy.
 Plating: Gold over Nickel.
 Contact Engagement Force: 12 oz. (3.4N) Max.
 Contact Separation Force: 0.75 oz. (0.2N) Min.
 Temperature Range: -55° to +105° C.

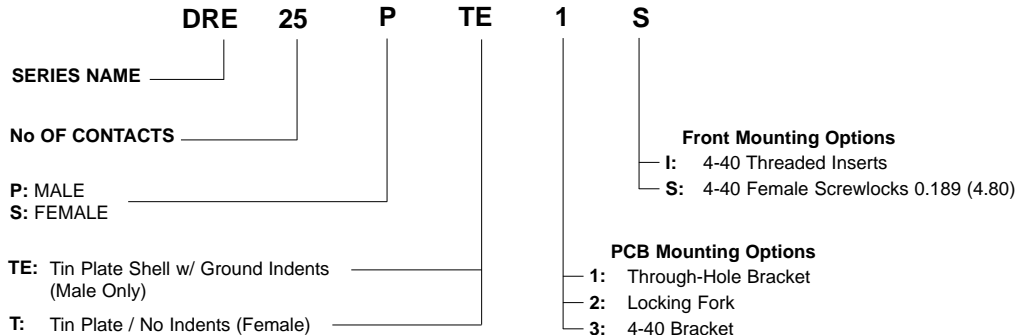
ELECTRICAL

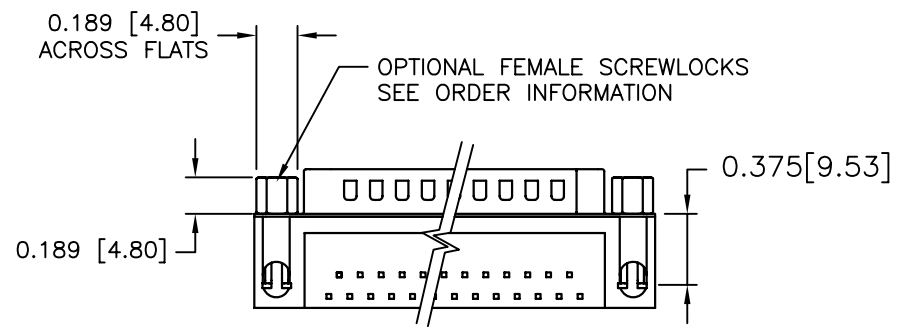
Voltage Rating: 300 VDC.
 Current Rating: 3 Amps.
 IR: >3000 Meg OHms.
 CR: <15 Milliohms.
 Dielectric Withstanding Voltage: AC 1000 V Min. (for 1 Minute).

D-SUB R/A PCB CONNECTORS - DR SERIES - DIMENSIONS						
						INCHES [MM]
No. of Contacts	Shell Size	A ±0.015 [±0.380]	B ±0.005 [±0.127]	C ±0.005 [±0.127]	E Max. Female ±0.005 [±0.127]	F Min. Male ±0.005 [±0.127]
9	E	1.213 [30.81]	0.984 [24.99]	0.494 [12.55]	0.643 [16.33]	0.666 [16.92]
15	A	1.541 [39.14]	1.312 [33.32]	0.494 [12.55]	0.971 [24.66]	0.994 [25.25]
25	B	2.088 [53.04]	1.852 [46.99]	0.494 [12.55]	1.511 [38.38]	1.534 [38.96]
37	C	2.729 [69.32]	2.500 [63.50]	0.494 [12.55]	2.159 [54.84]	2.182 [55.42]

NOTE: 50 Position also Available. Consult Factory for Details.

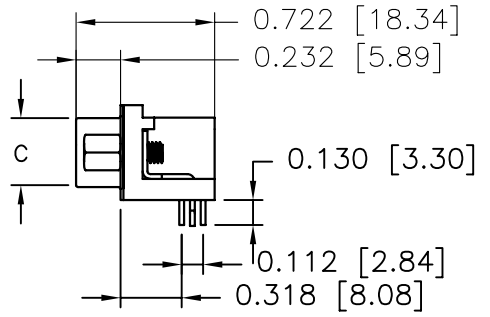
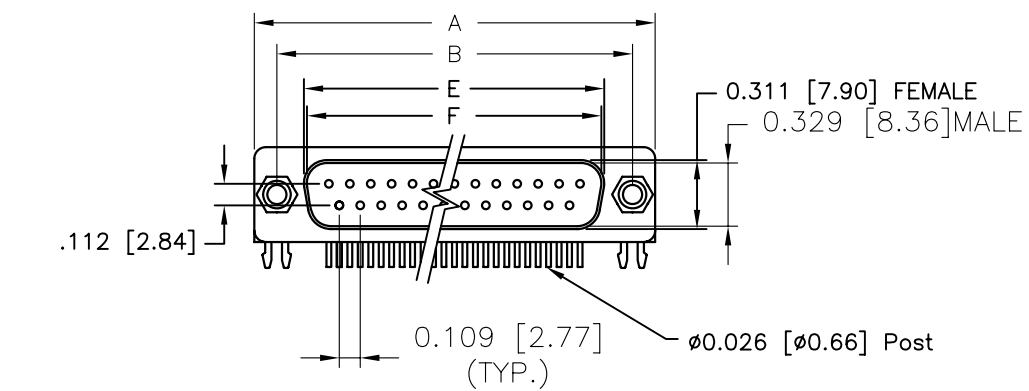
ORDER INFORMATION



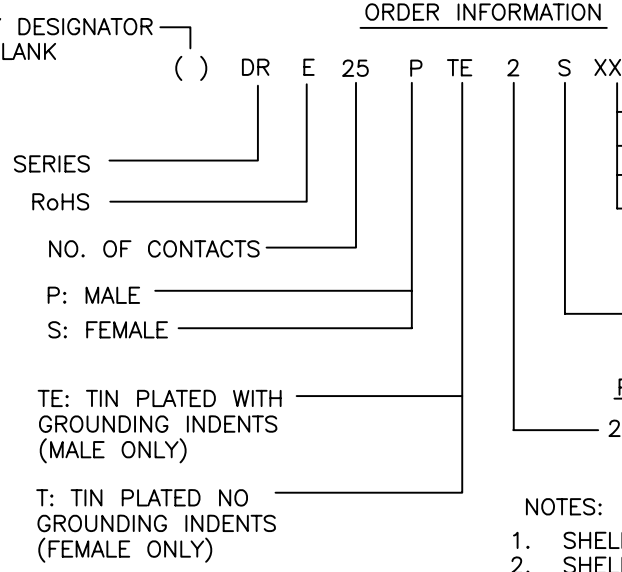


DIMENSIONS INCHES [MM]						
No. of Contacts	Shell Size	A ±0.010 [±0.254]	B ±0.010 [±0.254]	C ±0.010 [±0.254]	E Max. Female ±0.010 [±0.254]	F Min. Male ±0.010 [±0.254]
09	E	1.213 [30.81]	0.984 [24.99]	0.494 [12.55]	0.643 [16.33]	0.666 [16.92]
15	A	1.541 [39.14]	1.312 [33.32]	0.494 [12.55]	0.971 [24.66]	0.994 [25.25]
25	B	2.088 [53.04]	1.852 [46.99]	0.494 [12.55]	1.511 [38.38]	1.534 [38.96]
37	C	2.729 [69.32]	2.500 [63.50]	0.494 [12.55]	2.159 [54.84]	2.182 [55.42]

REVISIONS				
ZONE	REV	DESCRIPTION	DATE	APPROVED
	A	ECN 0619	25-AUG-06	
	B	ECN 0648	06-JUN-08	



FACTORY DESIGNATOR
LEAVE BLANK



CONTACT FINISH:

S: SELECTIVE GOLD FLASH OVER NICKEL
EMPTY: GOLD FLASH OVER ENTIRE CONTACT
S15: 15uI GOLD MATING END - TINNED SOLDER PCB END
S30: 30uI GOLD MATING END - TINNED SOLDER PCB END

FRONT MOUNTING OPTIONS

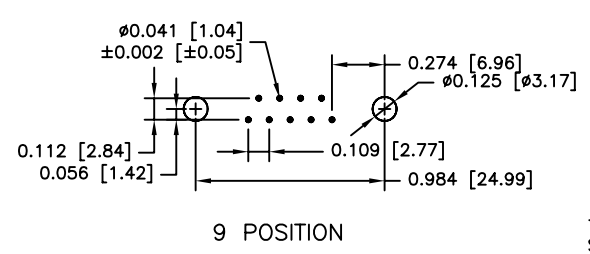
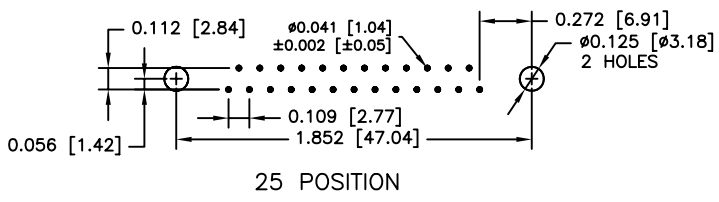
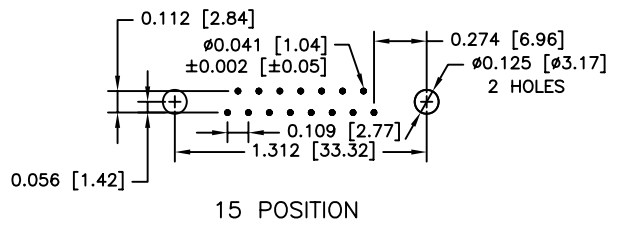
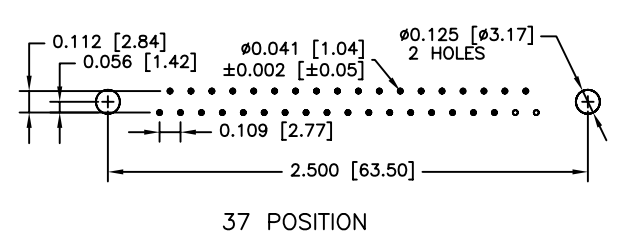
I: 4-40 THREADED INSERTS
S: 4-40 FEMALE SCREWLOCKS .189 [4.80]

PCB MOUNTING OPTIONS

2: LOCKING FORKS

- NOTES:
- SHELL MATERIAL: STEEL
 - SHELL FINISH: TIN PLATED
 - INSULATOR MATERIAL: THERMOPLASTIC UL94V-0
 - INSULATOR COLOR: BLACK
 - CONTACT MATERIAL: COPPER ALLOY
 - CONTACT TYPE: STAMPED
 - CONTACT FINISH: SEE ORDER INFORMATION
 - CONTACT ENGAGEMENT FORCE: 12 oz. (3.4N) Max.
 - CONTACT SEPERATION FORCE: 0.75 oz. (0.2N) Min.
 - TEMPERATURE RANGE: -55° TO +105° CENTIGRADE
 - VOLTAGE RATING: 250 VAC
 - CURRENT RATING: 3 AMPS
 - INSULATION RESISTANCE: >3000 MEGOHMS @ 500 VDC
 - CONTACT RESISTANCE: <15 MILLIOHMS
 - DIELECTRIC WITHSTANDING VOLTAGE: 1000 VAC MIMIMUM (1 MINUTE)
 - COMPLIANCE NOTE:
PART MUST BE IN COMPLIANCE TO:
DIRECTIVE 2002/95/EC of 27 January 2003 [RoHS]

RECOMMENDED PCB HOLE PATTERNS



THIS IS A CONTROLLED DOCUMENT AND IS SUBJECT TO CHANGE. CONTACT NORTHERN TECHNOLOGIES ENGINEERING FOR THE LATEST REVISION.

UNLESS OTHERWISE SPECIFIED		Northern Technologies <small>THIS DRAWING IS THE PROPERTY OF NORTHERN TECHNOLOGIES AND SHOULD NOT BE REPRODUCED WITHOUT NORTHERN TECHNOLOGIES WRITTEN PERMISSION.</small>		
DRAWN JSD		PART NUMBER SEE ORDER INFORMATION		
CHECKED SCN		DESCRIPTION DRE SERIES CONNECTORS 0.318 FOOTPRINT [RoHS]		
ISSUED		SIZE B	CODE 200_159	DWG NO. 0002-200-159
09-DEC-05		SCALE N.T.S.		REV
09-DEC-05		SHEET 1 OF 1		